



Dedication

Teamwork

Integrity

Innovation

Professionalism

**Tincol Group (Pty) Ltd** is a diversified company committed to advancing industry solutions across Africa. One of our core divisions is dedicated to **the manufacturing and distribution of high-quality mining laboratory consumables**, serving the mineral testing, analysis and exploration sectors across the African continent. With a robust regional footprint and a reputation for excellence, our mining laboratory consumables Division partners with mining companies, assay laboratories, and mineral testing and analysis facilities to ensure consistent, accurate, and safe sampling and analysis.





### MISSION

- To manufacture and supply world-class mining laboratory consumables tailored to the rigorous demands of the African mining sector.
- To deliver consistent quality, precision, and durability in all our products.
- To contribute to the sustainability and development of African mining through reliable laboratory support solutions.

### VISION

To be Africa's leading provider of innovative and reliable mining laboratory consumables, driving quality and efficiency in mineral analysis.

# OUR VALUES



### Quality First

Products that meet global standards.



### Innovation

Embracing new technologies in manufacturing.



### Reliability

Consistent supply, even in remote locations.



### Integrity

Ethical practices in all our operations.



### Customer Focus

Solutions tailored to specific client needs.

We manufacture and distribute a wide range of laboratory consumables used in sample preparation, testing, and analysis across mining operations.

## Our Manufacturing Equipment

We have the state -of -the-art equipment that will allow us to produce some consumables that will allow us to distribute quality consumables and within the agreed times.

## Main Product Categories



150 x 225mm  
**Geo Sample packet L**



100 x 200mm  
**Geo Sample packet B**



97 x 140mm  
**Geo Sample packet S 1**



75 x 125mm  
**Geo Sample packet S**

## Mining Laboratories Geo Inner and Outer Boxes



## Other Shipping Boxes



- **Crucibles** (Clay, Graphite, Platinum)
- **Geochemical plastics of all sizes**
- **Labels**
- **Cupels** (Magnesia, Bone Ash)
- **Sample Bags & Tags** (Calico, Plastic, Kraft)
- **Fire Assay Tools and Accessories**

- **Pulp and Chip Sample Bags**
- **Assay Fluxes** (Litharge, Borax, Soda Ash, Silica)
- **Filter Papers**
- **Weighing Boats**
- **Sample Containers and Bottles**
- **Custom-Made Laboratory Consumables** (as per client specifications)







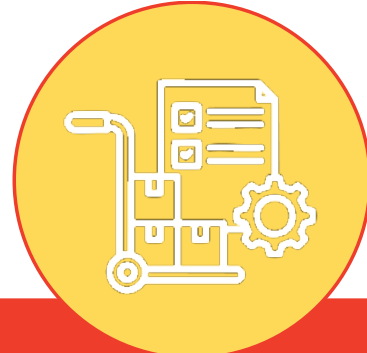
Custom branding and packaging



Regional logistics & cross-border delivery



Technical consultation on product use and storage



Bulk procurement and contract supply agreements

We serve mining and exploration companies in key mining regions such as:



- South Africa
- Botswana
- Zambia
- Namibia
- Zimbabwe
- Ghana
- DRC
- Tanzania
- Mozambique
- And other mineral-rich countries in Sub-Saharan Africa



All products are subjected to rigorous **quality control measures** to meet both **local and international standards** (e.g. ISO, ASTM). Our QA/QC processes ensure durability, chemical resistance, and accurate performance across all products.



We are committed to:



Environmentally responsible  
manufacturing



Safe and ethical sourcing of raw  
materials



Compliance with regional  
mining and trade regulations





## Why Choose Tincol Mining Laboratory Consumables Services for Your Business?

**African Presence:** Strategically located for rapid delivery across the continent.

**Reliable Supply Chains:** Robust manufacturing and distribution networks.

**Client-Centric Approach:** Custom solutions and responsive support.


**Proven Experience:** Trusted by top-tier mining laboratories and exploration firms.



**Tincol Group (Pty) Ltd**  
**Mining Laboratory Consumables Division**



Scan to chat with us!

 087 808 5715

 [www.tincol.co.za](http://www.tincol.co.za)

 [sales.tincol.co.za](mailto:sales.tincol.co.za)

 156 Springfield Road, Carlswald, Midrand, 1687

**TINCOL**  
MINING LABORATORY  
CONSUMABLES